

## Automatic monitor management for comfortable, consistent, and energy-efficient Windows workspaces

### The challenge in modern workplaces

In many organizations, employees experience daily discomfort due to poorly configured or misaligned monitors. Because of hybrid working, flexible workspaces, and changing connections, monitor settings are constantly being disrupted.

In addition, there is a frequently underestimated fact: monitors are typically factory-set to high brightness and contrast levels, which in many office environments are significantly too high. This results in unnecessary eye strain as well as unnecessary energy consumption.

#### Common issues:

- Excessive or inconsistent brightness and contrast
- Incorrectly positioned or rotated external monitors
- Unintentionally duplicated displays
- Poor vertical alignment between screens
- No simple presets for different workspace scenarios



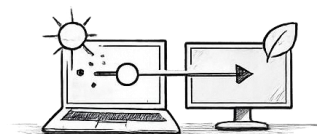
Even when these settings are manually corrected, they are often lost again at the next session or when moving to another workspace.

### The solution: ScreenGenie™

ScreenGenie fully and consistently automates monitor settings within Windows 11. Without any user interaction, displays are correctly configured every time at sign-in or automatically via the ScreenGenie.Agent.

#### ScreenGenie:

- Automatically adjusts brightness and contrast per monitor
- Corrects monitor order and layout
- Restores unintended or initial display duplication
- Aligns screens with pixel-level precision
- Positions external displays to the left or right based on connection type, name, or serial number



The result: always a correct, ergonomic, and comfortable workspace.

# ScreenGenie™

Smart Display Automation for Modern Workplaces

## Value for employees

ScreenGenie ensures that every employee works with a comfortable and consistent display setup. Brightness and contrast are automatically adjusted to predefined levels, and screens are correctly aligned. This reduces eye strain, supports an ergonomic working posture, and eliminates the need for employees to manually correct settings. The result is a pleasant workspace and immediate productivity upon login, regardless of location or workstation.



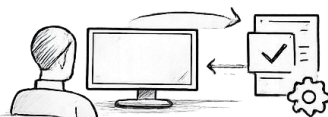
## Value for organizations

By structurally optimizing monitor settings, ScreenGenie reduces the energy consumption of workstations. At the same time, the number of IT tickets related to display issues decreases and the overall workplace experience improves. This contributes to higher employee satisfaction and supports sustainability goals without requiring major changes to the IT infrastructure.



## Value for IT

ScreenGenie provides IT departments with centralized control over monitor settings across the organization. Settings are automatically applied through system-based and monitor-based profiles. The solution operates entirely in the background and requires no user interaction. ScreenGenie can be deployed centrally and controlled via command-line instructions, enabling IT administrators to adjust settings remotely and provide additional support when needed. This results in a stable, manageable, and scalable approach to display management.



## Practical deployment

ScreenGenie is designed for Windows 11 environments and works with both laptops and desktops. ScreenGenie supports up to two external monitors and primarily manages the settings of these external displays. When the laptop screen is active (with the laptop open), it is included in the Windows layout and alignment to ensure the overall setup remains correct and consistent. The solution works with existing hardware and supports USB-C, DisplayPort, and HDMI connections, both directly connected and via a docking station. ScreenGenie can be implemented quickly without changes to existing workflows.

# ScreenGenie™

Smart Display Automation for Modern Workplaces

## TECHNICAL SPECIFICATIONS

### Platform & System Requirements

#### Operating System

Microsoft® Windows 11

#### Architecture

x64 (64-bit)

#### .NET Runtime

.NET 8.0 – Self-contained deployment (no separate runtime installation required)

#### Hardware Configuration

Laptop or desktop

Support for one or two external monitors

#### Connections

USB-C / Thunderbolt (including DP Alt Mode)

DisplayPort (direct or via docking station)

HDMI (direct or via docking station)

Support for common docking solutions

#### Functionality

Automatic configuration

Brightness and contrast per monitor

Monitor order and layout

Vertical alignment

Left/right positioning based on connection type, name, or serial number

#### Profile Management

Profile per system

Settings per individual monitor

Automatic application at sign-in (e.g., Task Scheduler), one-click via the ScreenGenie

Engine, or fully automated via the ScreenGenie Agent

#### Installation & Deployment

Installer

MSI (suitable for enterprise deployment)

#### Centralized Installation

Deployable via standard software distribution tools

#### Command-line Support

Full configuration via CLI

Suitable for scripting and remote management

#### Silent Installation

Supported, including license key

#### Management & Integration

Operation

Runs fully in the background (no user interaction required)

#### Logging

Configuration and status logging available

#### Manageability

Scalable within enterprise environments

#### Licensing Model

License

Subscription-based

Terms: 1, 2, 3, or 5 years

#### License Type

Per system



Windows® 11 – 64bit

Microsoft and Windows are registered trademarks of Microsoft Corporation.